

Year Two Information September 2024

Who's who in Year Two?



Oak Class will be taught by Miss Bewick and Mr Ladyman.



Plane Class will be taught by Miss Chalmers.



Spruce Class will be taught by Mrs Herring.

Please note that these arrangements are subject to change based on other considerations and the needs of the school, e.g. staff absences.

Specific Teaching Arrangements



Miss Tweed and Miss Shanks will be supporting across Year Two.

Mr Davies will be teaching PE in Spruce and Plane on a Wednesday afternoon and Miss Gavin and Miss Dilks will be teaching on a Wednesday afternoon.

Engagement with the school

- Green Ridge Weekly Round-Up – sent home each Friday via e-mail to all parents/carers
- Book look opportunities for parents/carers to come into class and see how pupils are doing – held each half-term at a designated date published in newsletter at pupil-drop off (between 8.35-9.00am) [Note book looks do not take place in the half-term when there is a pupil learning review]
- Pupil Learning Reviews – October and February
- Annual Report to parents/carers - July

Typical timetable

Day	8.35 - 8.50	8.50 - 9.05	9.05am - 9.35am	9.35 - 10.25	10.25 - 10.45	10.45 - 11.00	11.00 - 12.00	12.00 - 1.00	1.00 - 1.10pm	1.10pm - 1.30pm	1.30pm - 2.15pm	2.15pm - 3.05pm	3.05 - 3.15pm
Monday	Morning Fluency	Maths Mastery	Reading Skills	Oak: PE Plane: PE Spruce: English	Whole School Assembly	Break	Oak: English Plane: English Spruce: PE	Lunch	Independent Reading	Spelling	Oak: Maths Plane: Maths Spruce: Maths	PSHE	Story time
Tuesday	Morning Fluency	Maths Mastery	Reading Skills	Maths	KS1 Singing assembly		English		Independent Reading	Spelling	Library	History/Geography	
Wednesday	Morning Fluency	Maths Mastery	Reading Skills	Maths	Class Assembly		English		Independent Reading	Spelling	Oak: RE Plane: PE Spruce: RE	Oak: Computing Plane: RE Spruce: PE	
Thursday	Morning Fluency	Maths Mastery	Reading Skills	Maths	KS1 assembly		English		Independent Reading	Grammar/Punctuation	Oak: Science Plane: Science Spruce: Science	Oak: Music Plane: Music Spruce: Music	
Friday	Morning Fluency	Maths Mastery	Reading Skills	Maths	KS1 Celebration assembly		English		Independent Reading	Grammar/Punctuation	Oak: PE Plane: Computing Spruce: Computing	Oak: Art/DT Plane: Art/DT Spruce: Art/DT	

Start of day routines in Year Two

- Classroom doors open at 8.35am. Pupils complete morning fluency as part of the maths curriculum between 8.35-8.45am. Where possible, please ensure that your child does not miss this opportunity.
- Doors will close at 8.45am and this is when the register begins. We are asked that once doors close, they are not re-opened for any late pupils. Late pupils must go via the office to sign-in and give a reason for lateness. Please avoid sending your child to the classroom door alone if it is closed.
- We ask that you leave children at the door in the mornings and allow children to walk into the classroom by themselves.
- Parents/carers can pass on any quick messages to staff at the door in the mornings. However, if parents/carers do need to speak with your child's teacher about something that is urgent and in private, then please do make an appointment through the main office by telephone or e-mail.

End of day routines in Year Two

- The school day finishes at 3.15pm. Pupils will only be allowed to leave with an adult who is on the school's permission list.
- Children will be asked to gather their belongings and stand behind their chair. The class teacher will then call them to the door when they see someone is there to collect them.
- Please be patient with us in the first few weeks should we need to check before allowing a pupil to leave, as many new adults in year-groups may not know all faces around the school!

Things to bring

- PE Kit – all items need to be named. The PE kit will be sent home at the end of each half-term and will be kept in-school each week. If your child wears their PE kit for an enrichment club, please make sure it is returned to school the next day.
- Named water bottle
- Named book-bag. No rucksacks.
- Please do not let your child bring in any toys or personal belongings unless we have specifically requested!

PE/Games

- PE/Games takes place on Monday morning for all classes, Wednesday afternoon for Spruce and Plane and Friday afternoon for Oak.
- Children need their full PE kits in school for the whole-week.
- Children should be prepared to go outside whatever the weather for Games, so please ensure they have a tracksuit/jumper etc. to put on over their normal PE shorts and T-shirt. Trainers are definitely required for this lesson!
- Children cannot wear normal PE kits on their own outside in the winter (due to the weather).

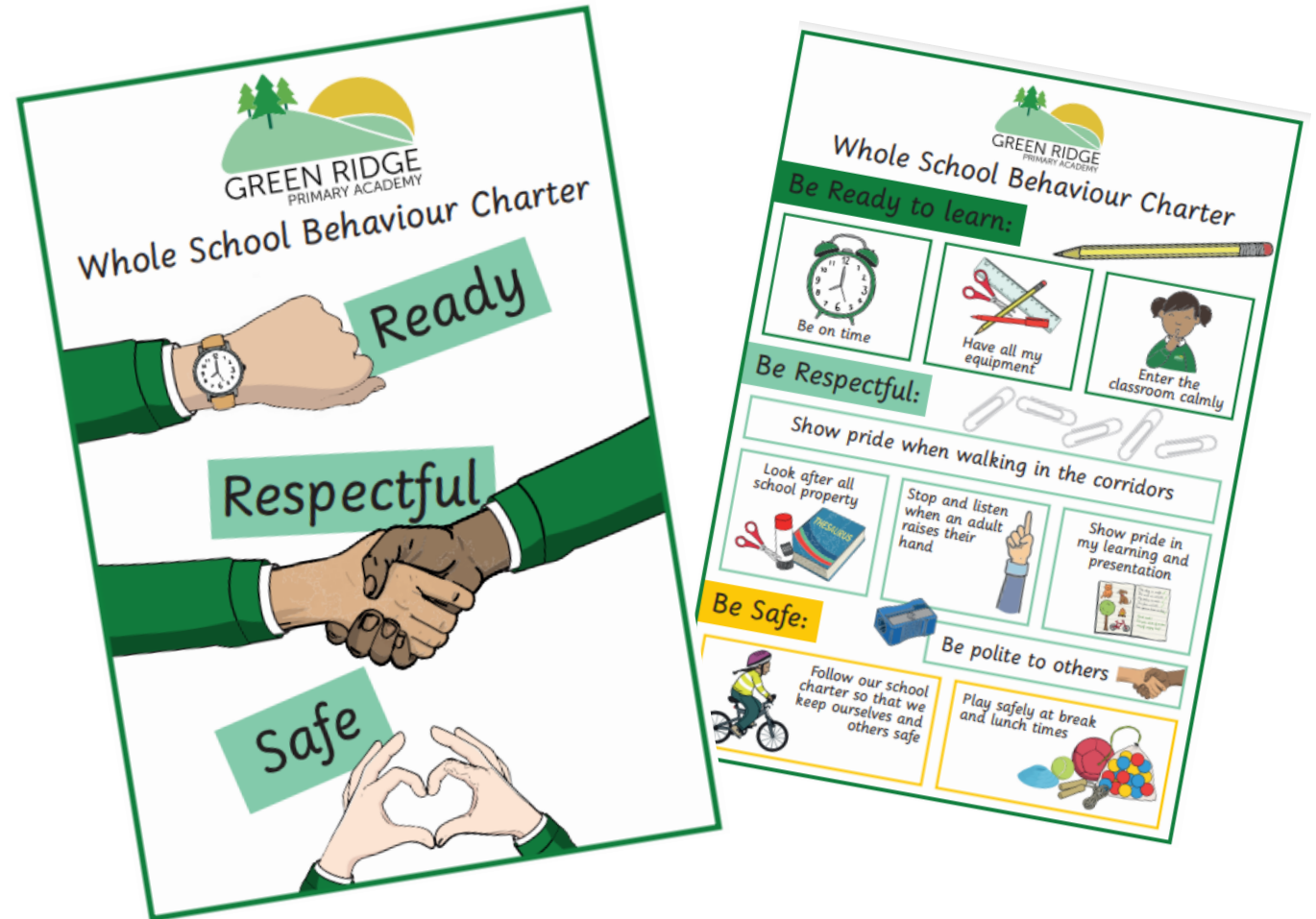
School behaviour charter, values and learning superheroes

Use kind words and actions		Listen to one another		Try our best	
Honesty	Friendship	Forgiveness	Responsibility	Gratitude	Respect



Behaviour Policy

- We have the right to learn in a safe and trusting community in which effective learning can take place. As part of our commitment to this right, we have reviewed our behaviour policy and simplifying our school charter to enable all our children to embrace them.
- Our new behaviour charter is:
READY, RESPECTFUL, SAFE



Behaviour Policy

Rewards and positive reinforcement

- Verbal praise
- Sharing pupils' work with other staff or pupils to celebrate
- Communicating praise to parents via phone call or written correspondence
- Certificates
- Positions of responsibility, such as prefect status or being entrusted with a particular decision or project
- Whole-class or year group rewards, such as a popular activity.
- “Superhero Shake” child
- Learning dots
- House points

Attendance

At Green Ridge we know that good attendance is the key to successful schooling and we believe our pupils can be amongst the best. Attending school every day will help give your child the best possible start in life.

Did you know?

- 90% attendance is equivalent to missing 100-hour long lessons.
- If you take your child on a two-week holiday in term time, attendance for the year immediately drops to 95%.
- A two-week holiday in term time means your child has approximately 50 hours of missed work to catch up on.
- 90% attendance is equivalent to half a day's absence each week: four weeks over the year and half a year's absence over five years.
- 90% attendance is equivalent to a full month off school in a year.
- Missing just 10 minutes of school a day is the same as missing two weeks over the year.
- You can be fined up to £2,500 if your child misses too much school.

Attendance Ladder

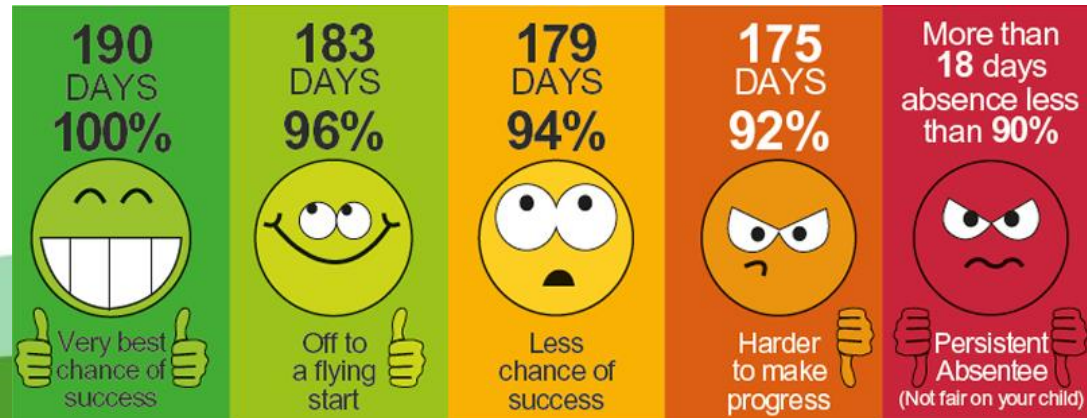
How close are you to reaching the top?



Attendance

How can I help my child attend school regularly?

- Talk to your child about school
- Take a positive interest in your child's work including home learning activities
- Keep in touch with school staff
- Make sure everything is ready for them the evening before or first thing in the morning so there is no worry about missing uniform, home learning and being late.
- Aim for 10 hours sleep a night for your child. This will make the following day at school easier for them to cope with.
- Make sure your child eats breakfast, it helps them stay alert at school.
- Help your child develop routines.
- Develop a night-time routine that involves checking their homework, reading & bed.
- Try and make sure that any medical appointments are booked for outside of school hours where possible.



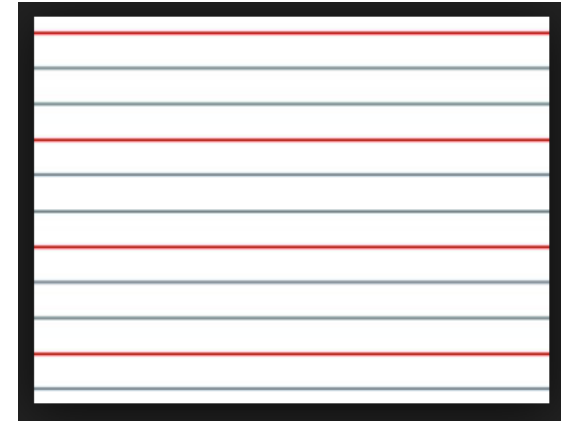
Learning themes across the year

Each half term has a theme linked to either history or geography.

- Autumn One – London's Burning
- Autumn Two – You're in Europe
- Spring One – A Local Study – Aylesbury
- Spring Two – Wonderful World
- Summer One – Nurturing Nurses
- Summer Two – Coming to Kenya

Presentation

- There is a focus on presentation across the school, particularly on layout and expectations of what the children produce.
- Children will need to write in pencil during EYFS/KS1, and then move onto black handwriting pens in KS2, and we will insist on the highest standards so children take pride in their own work and learning.



Reading expectations- Year 2

- The children will be able to choose from the colour banded books based on their fluency level. To ensure that reading at home is an enjoyable experience and supports the children's confidence and fluency, we will ensure your child can read 95% of the words within these books.
- Children in Year 2 who are still taking part in phonics will be given a phonic reading practice book to share at home. These Reading Practice Books will be sent home every Thursday after the children have practised reading a similar matched book in school throughout the week. They must be returned to school the following Wednesday. We will only send home another Reading Practice Book once the previous one has been returned, so please ensure that books are returned to the class teacher.
- When you read with them, please listen with interest and, most importantly, encourage and praise, enthusiastically acknowledging your child's achievement.
- The children will complete reading daily in school and will be heard by adults within their class. Each child will be heard read once a week by an adult during these sessions.

Reading expectations

- In addition, your child will also bring home a Sharing Book, which they will have chosen themselves from the library. This is a book that your child may not be able to read on their own but that you can both read and enjoy together. It will not be a book that has been practised at school. While reading, you can discuss the pictures, predict what might happen next, use different voices and just enjoy the story or new facts if it is a non-fiction book. The main idea of the Sharing Book is to have fun reading and promote a love of books!
- The children will visit the library weekly.

Home learning expectations

- Children in Year Two are expected to read daily at home and use TTRS to practise their times tables.
- Class teachers will monitor TTRS to ensure pupils are engaging with the app and 'heat maps' will be shared at parents evening to highlight children's success on the app. There are also fortnightly certificates for the 'Quickest Rockstar' and the 'Hardest Working Rockstar'.
- There will also be a selection of optional home learning tasks set on Teams. There will be a variety of activities including writing, creative and experience tasks. Children can either upload their work on Teams or bring it into school if it is a physical piece of work such as a drawing or model.

How parents/carers can support at home

- Keep up with daily reading – including questions about what they have read.
- Read stories to your child to nurture a love of reading and stories.
- Practise timetables – 2s, 5s and 10s.
- Take up any opportunity to do some writing.

Trips, visits and enrichment

Trips and Visits

- Great Fire of London Workshop
- Claydon House

11B411

- Grow your own/Seeds to Supper
- Flash Mob

Any questions?

