

Geography - Year 2

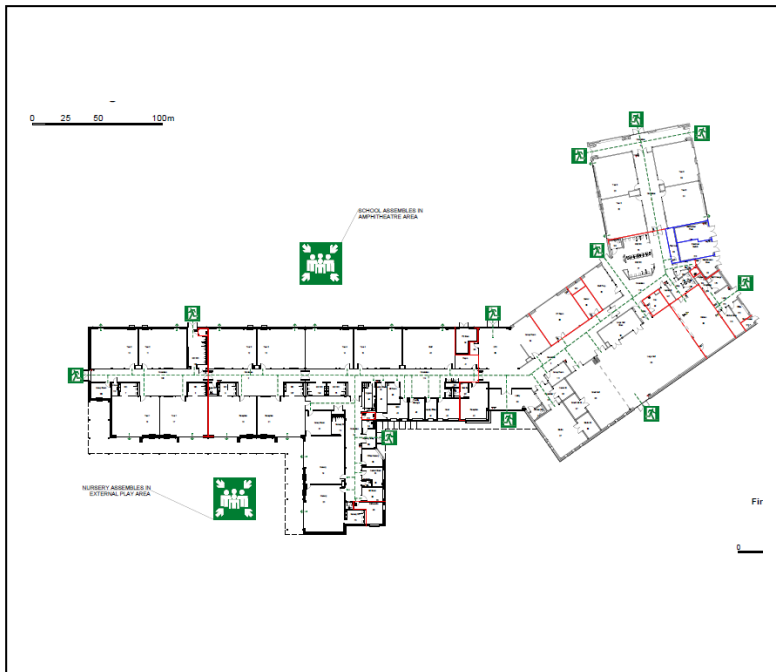


Digimaps

Use the QR Code to explore different maps of the local area!


Username: HP180YA

Password: yagues0397




Key

School




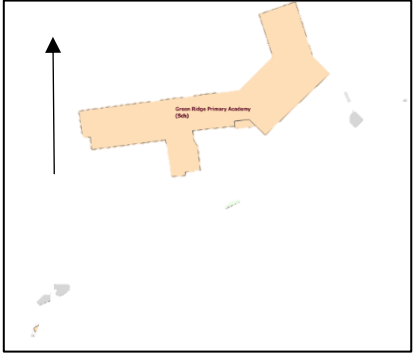

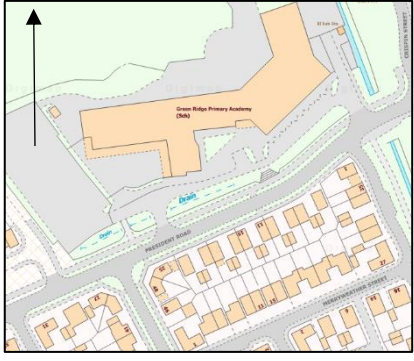


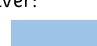
Shops




Green Ridge Primary Academy

We go to Green Ridge Primary Academy School which is found in Berryfields, Aylesbury, Buckinghamshire. Berryfields is mainly made up of houses.

How to draw a sketch map

How to draw a sketch map			
	<p>A Map of Green Ridge and its surrounding areas</p> 	<p>A Map of Green Ridge and its surrounding areas</p> 	<p>A Map of Green Ridge and its surrounding areas</p>  <p>Key</p> <p>Settlement:</p>  <p>Roads:</p>  <p>River:</p> 
<p>Step 1: Find an aerial map of your location to use to help you. Mark what direction North is with an arrow.</p>	<p>Step 2: Draw your frame, write a title and draw in any main features.</p>	<p>Step 3: Add in areas that have similar things in them (e.g. houses, forests, etc.) Try to think about scale!</p>	<p>Step 4: Add in roads, streams and any other smaller details to your map. Create a key to show what different things are in your map!</p>
<p>Scale in map drawing is when we try to make sure that objects look like their real size – for example, the school is bigger than the houses!</p>		<p>A key helps a map reader to know what each part of a map represents without needing to add words onto the map.</p>	