

# Knowledge Organiser - Joseph Mallord William Turner (Y5)

## Vocabulary

Shade	A colour, especially with regard to how light or dark it is or as distinguished from one nearly like it e.g. various shades of blue.
Contrast	Differences in colour, tone, or shape that contribute to the visual effect of a design or image.
Tint	A shade or variety of a colour.
Depth	Intensity of colour.
Mood	The atmosphere or pervading tone of something.
Perspective	The art of representing three-dimensional objects on a two-dimensional surface so as to give the right impression of their height, width, depth, and position in relation to each other.



## Biography

- Joseph Mallord William Turner (often known as J.M.W. Turner or William Turner) was an English artist of the Romantic era.
- Turner lived between 1775 and 1851. He spent his whole life living in London, UK. He was born in Covent Garden, and died in Chelsea.
- He is known for his expressive use of colours, his imaginative landscapes and his marine paintings.
- He is most famous for paintings such as The Slave Ship, Dido Building Carthage and Rain, Steam and Speed.
- He completed over 2,000 paintings and around 19,000 drawings and sketches.
- He was an intensely private man, who often behaved unusually. From 1845 onwards, he lived in near-poverty and with poor health.

## Styles and Techniques

Romanticism	<p>Romanticism was an arts movement that took place in Europe in the late 1700s until the early 1800s. It was a reaction to the Industrial Revolution, which occurred around the same time.</p> <p>In contrast to the dominance of the Industrial Revolution, romanticism demonstrated the beauty and power of nature. It celebrated the themes of chaos and natural beauty and idealized rural life.</p> <p>J.M.W Turner is famed for his natural landscapes, which use sweeping brushstrokes to express strong emotions and the power of nature.</p>	
Impressionism	<p>Turner is also often viewed as an impressionist artist, particularly in his later work.</p> <p>Impressionists peaked in the mid-to-late 19th Century, and aimed to create a 'moment in time' – particularly focusing on how light and movement were presented.</p> <p>Impressionists often focused on unusual angles of everyday subjects, working quickly (before the 'moment' changed too drastically).</p>	

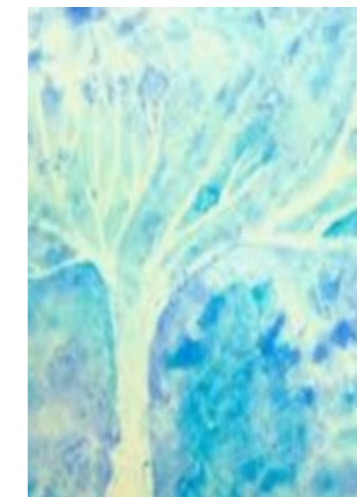
## How do I paint like Turner?

**Step 2:** Think carefully about the different colours that you would like to use – midnight blue sky, or perhaps an orange sunset?

**Step 1:** Take a white crayon and draw the objects in your landscape, e.g. trees, bushes, the horizon, mountains, boats.

**Things you'll need:**  
White crayon, watercolour paints, paper.

**Step 3:** Use your watercolours to go over the page, including the crayon. Use lots of paint!



A child's Turner-inspired watercolour landscape painting

**Step 4:** Almost like magic, the drawing that you did with crayon will appear. Think carefully about which areas are lighter and darker to reflect the light and movement of the moment in time.

**Step 5:** Add any finer finishing touches to your painting and then leave it to dry.



In February 2020, the face of JMW Turner and was the first £20 note printed on polymer plastic.



Dido Building Carthage 1815



The Slave Ship 1840



Rain, Steam and Speed 1844

## Timeline Turner's Life

<b>23rd April, 1775</b>	<b>14th May, 1775</b>	<b>1786</b>	<b>1790</b>	<b>1793</b>	<b>1800</b>	<b>1815-1819</b>	<b>1825</b>	<b>1840</b>	<b>1845</b>	<b>19th Dec, 1851</b>
J.M.W. Turner is born in Covent Garden, London.	He is baptised at St. Paul's, Covent Garden.	Completes his earliest drawings at school in Margate.	Exhibits his first watercolour at the Royal Academy.	First attempts at painting in oil.	His mother is moved to a hospital for the insane.	Travelled around Europe. Visited Italy in 1819 – visiting Rome, Naples and Venice.	Becomes more and more eccentric and isolated.	Completes The Slave Ship.	His health begins to fail badly.	He dies. His body is buried at St. Paul's Cathedral.

*'It is only when we are no longer fearful that we begin to create.'*