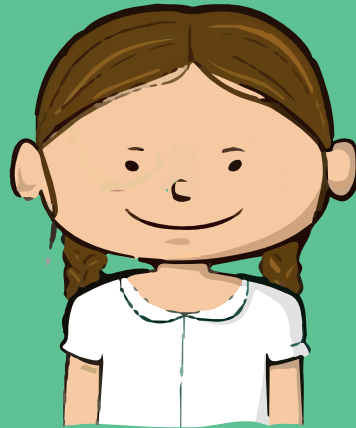


BLUE ZONE



Sad
Sick
Tired
Bored
Moving
Slowly

GREEN ZONE



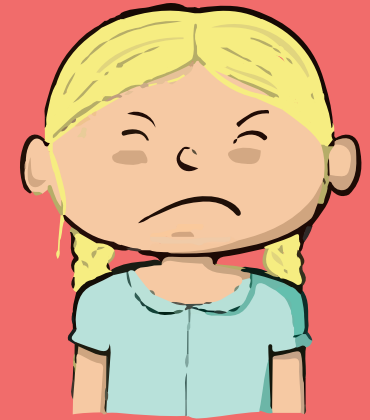
Happy
Calm
Feeling Okay
Focused
Ready
to Learn

YELLOW ZONE



Frustrated
Worried
Silly/Wiggly
Excited
Loss of
Some Control

RED ZONE



Mad/Angry
Terrified
Yelling/Hitting
Elated
Out of
Control