

Science, Year 4 - Teeth and Eating

Learning Objectives -

National Curriculum Link: Humans and other animals.

- Describe the simple functions of the basic parts of the digestive system in humans.
- Identify the different types of teeth in humans and their simple functions.
- Construct and interpret a variety of food chains, identifying producers, predators and prey.

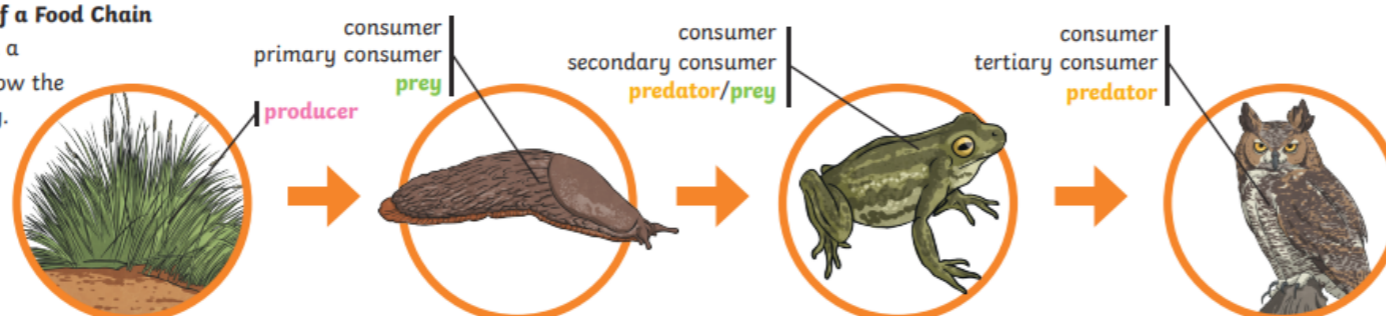
Working Scientifically Skills -

- Identify differences/similarities - compare the teeth of carnivores and herbivores.
- Draw and discuss their ideas about the digestive system and compare them with models or images.
- Ask relevant questions and use scientific enquiry to answer them.
- Set up practical enquiries.
- Make systematic and careful observations.
- Gather, record, classify and present data/findings.
- Use results to draw simple conclusions.

What should I already know?

- Some parts of the human body and what they do - skeleton and muscles.
- What carnivores, omnivores and herbivores are.
- All animals need water, air (oxygen) and food to survive.
- How to stay healthy.
- Simple food chains.

An Example of a Food Chain
The arrows in a food chain show the flow of energy.



Scientific Vocabulary -

Anus: Where faeces and waste is pushed out of the body.

Canine: Pointed teeth near the front of the mouth of humans and some animals.

Carnivores: Animals that eat meat.

Decay: Gradually destroyed by a natural process.

Digestion: Breaking down the food that we eat.

Enamel: The hard white substance on teeth.

Herbivore: An animal that eats plants.

Incisor: Teeth used for biting and cutting.

Intestine: The tubes in your body that food passes through.

Molar: Large teeth at the back of your mouth for chewing.

Nutrients: A substance absorbed by the body, needed for growth.

Oesophagus: A tube that moves food from the mouth to the stomach.

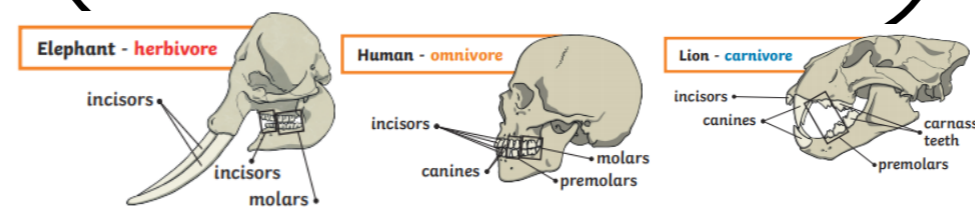
Omnivore: An animal that eats both meat and plants.

Predator: An animal that hunts and eats other animals.

Producer: A plant that produces its own food.

Prey: An animal that gets hunted by another.

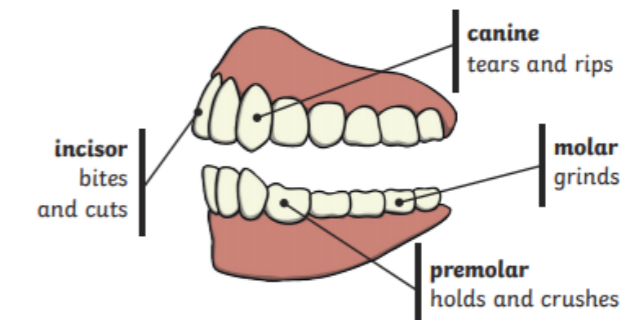
Saliva: The watery liquid in your mouth. Helps to break up food.



What will I know by the end of this unit?

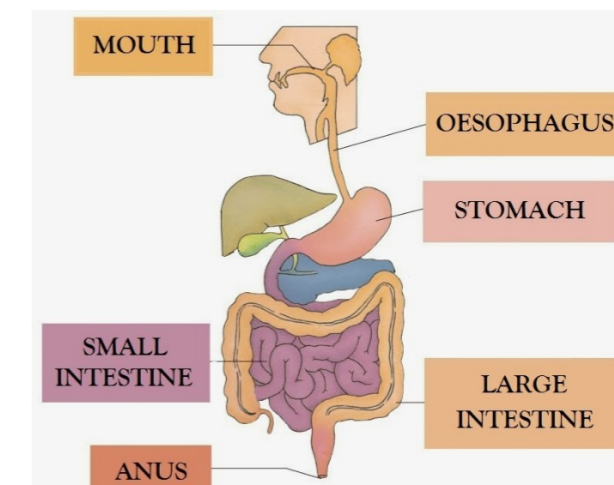
The role and function of teeth

- Teeth start the digestive process.
- We need to look after our teeth or plaque will build up and cause tooth decay.



Some people have wisdom teeth but they have no function now.

How the Digestive System works



- The digestive system begins with the teeth.
- Saliva begins to break down the food. The food is swallowed and travels down the oesophagus to the stomach where the food is mixed.
- The mixed food travels through the small intestine where nutrients are absorbed. Leftovers travel through the large intestine.
- The waste food reaches the rectum where it is turned into faeces and excreted through the anus.